

Cloud Migration Solution

A large, stylized graphic in a darker blue shade. It features a cloud shape with a thick, upward-pointing arrow integrated into its center, symbolizing cloud migration.

PlayceRoRo

Fast and easy large-scale migration to the cloud

WHY PlayceRoRo

Playce RoRo is a migration solution that transfers AS-IS infrastructure built on Linux / Unix to cloud.

Features

AS-IS infrastructure can quickly and securely be migrated to the cloud using the automatic system diagnosis/analysis function.



Various OS Support

- Cloud migration support for Red Hat and Debian Linux
- Cloud migration support for AIX Unix



Cost Reduction

- Cost reduction (manpower / time) through web console-based migration wizard
- Service downtime minimization through non-disruptive migration



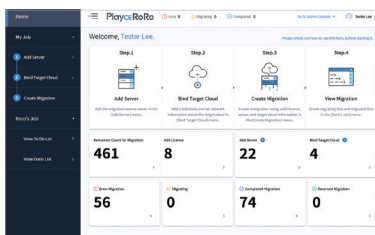
Flexible and Stable System

- Flexible configuration of the migration target server
- No changes required for the configured settings and software on the migration target server

Main Function

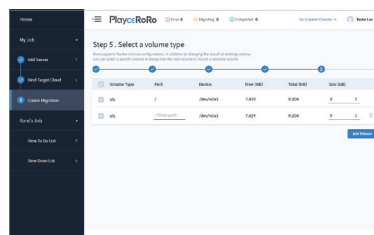
While performing L2C and U2C migration effectively, various features, including flexible volume configuration, network setting support and automatic image generation, are provided.

Agentless Migration Tool



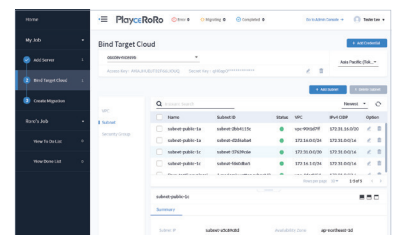
- Web console-based SaaS service without Agent installation
- Easy migration environment configuration with minimal information registration for the server

Flexible Volume Configuration by Path



- Single volume on-premises can be divided into multiple EBS volumes
- Multiple volumes on-premises can be combined into a single EBS volume

Network Configuration Support



- Access Key and Region setting function for the target cloud without AWS Console access
- Support for network related VPC, Subnet, Security Group settings

Application and Workload Migration

- Migrate without changing the settings and software configured on your existing on-premises

Auto Image Generation

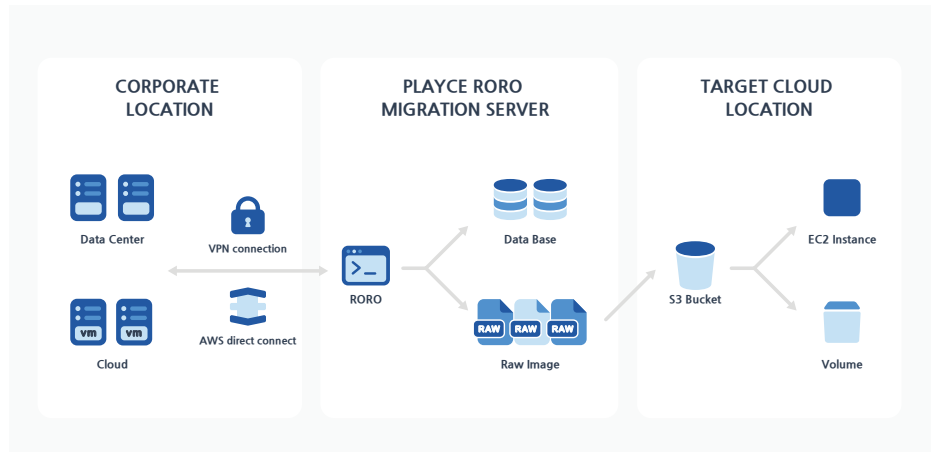
- Automatically generate on-premises images at the time of migration for backup and disaster recovery

Middleware (WAS) Analysis Feature

- Generate and convert migration reports of web applications running on WebLogic, WebSphere, and JBoss

Architecture

Automated system analysis tools and migration modules make images of on-premise server and store them in cloud storage, and then generate instances and additional volumes from the images.



Standard Support Specification

Please refer to the below table for support environment.

System															
Network	<ul style="list-style-type: none">• SSH connection required to user server from Playce RoRo• VPN can be used if necessary (may incur additional costs)• User account with SSH access• Must be able to log in using a password• Sudo command must be executable without password verification														
Package	<ul style="list-style-type: none">• rsync (required only for Linux)• python 2.7+ (required only for Linux)• Java 1.7+ (required only when using the WAS analysis feature)														
Solution															
License	<ul style="list-style-type: none">• License purchase required to perform migration														
AWS Service Limit	<ul style="list-style-type: none">• Up to five concurrent migrations per region• More migrations can be processed through the Support Center														
Supporting Operating Systems															
<table><tr><th>Linux 64Bit</th><th>Unix</th></tr><tr><td>Ubuntu 14.04, 14.10, 15.04, 16.04, 16.10</td><td>AIX 6.1, 7.1</td></tr><tr><td>Red Hat Enterprise Linux(RHEL) 6.1-6.9, 7.0-7.3</td><td></td></tr><tr><td>CentOS 6.1-6.6, 7.0-7.5</td><td></td></tr><tr><td>Debian 6.0.0-6.0.8, 7.0.0-7.8.0, 8.0.0</td><td></td></tr><tr><td>Oracle Linux 6.1-6.6, 7.0-7.1</td><td></td></tr><tr><td>Fedora Server 19-21</td><td></td></tr></table>		Linux 64Bit	Unix	Ubuntu 14.04, 14.10, 15.04, 16.04, 16.10	AIX 6.1, 7.1	Red Hat Enterprise Linux(RHEL) 6.1-6.9, 7.0-7.3		CentOS 6.1-6.6, 7.0-7.5		Debian 6.0.0-6.0.8, 7.0.0-7.8.0, 8.0.0		Oracle Linux 6.1-6.6, 7.0-7.1		Fedora Server 19-21	
Linux 64Bit	Unix														
Ubuntu 14.04, 14.10, 15.04, 16.04, 16.10	AIX 6.1, 7.1														
Red Hat Enterprise Linux(RHEL) 6.1-6.9, 7.0-7.3															
CentOS 6.1-6.6, 7.0-7.5															
Debian 6.0.0-6.0.8, 7.0.0-7.8.0, 8.0.0															
Oracle Linux 6.1-6.6, 7.0-7.1															
Fedora Server 19-21															

Case Study



“Using Playce RoRo, we have moved our existing OpenStack-based virtual machine to a public cloud environment very easily. This has helped the project by minimizing user errors and reducing time drastically. I recommend it to enterprises that are considering moving their platforms to public cloud environments.”



“Playce RoRo makes it easy to migrate customer’s legacy environment in the data center to the cloud. The solution is a useful tool for customers to move security-critical servers from their internal network to AWS cloud by providing both SaaS and installation options.”



Open Source Consulting

We have developed the cloud solutions based on open source software and released it on General Public License. We are continuously developing and servicing open source, public/private cloud, data center automation and IoT related solutions.

In addition, as a platinum partner of Atlassian, we have lots of practical experiences in technical/application/system architecture consulting and developments with Atlassian solutions.

On top of these expertise, we can provide Atlassian based ALM and DevOps solutions, comprehensive methodology consulting services.

Open Source Consulting

5F, Narakium Bldg., 32, Teheran-ro 83-gil,, Gangnam-gu, Seoul, Republic of Korea

T. +82-2-516-0711 E. sales@osci.kr

www.osci.kr

